

TPP1 Antibody (N-term)
Affinity Purified Rabbit Polyclonal Antibody (Pab)
Catalog # AP17047a

Specification

TPP1 Antibody (N-term) - Product Information

| | |
|-------------------|--|
| Application | WB,E |
| Primary Accession | O14773 |
| Other Accession | Q60HH1 , NP_000382.3 |
| Reactivity | Human |
| Predicted | Monkey |
| Host | Rabbit |
| Clonality | Polyclonal |
| Isotype | Rabbit IgG |
| Calculated MW | 61248 |
| Antigen Region | 6-34 |

TPP1 Antibody (N-term) - Additional Information

Gene ID 1200

Other Names

Tripeptidyl-peptidase 1, TPP-1, Cell growth-inhibiting gene 1 protein, Lysosomal pepstatin-insensitive protease, LPIC, Tripeptidyl aminopeptidase, Tripeptidyl-peptidase I, TPP-I, TPP1, CLN2

Target/Specificity

This TPP1 antibody is generated from rabbits immunized with a KLH conjugated synthetic peptide between 6-34 amino acids from the N-terminal region of human TPP1.

Dilution

WB~~1:1000

E~~Use at an assay dependent concentration.

Format

Purified polyclonal antibody supplied in PBS with 0.09% (W/V) sodium azide. This antibody is purified through a protein A column, followed by peptide affinity purification.

Storage

Maintain refrigerated at 2-8°C for up to 2 weeks. For long term storage store at -20°C in small aliquots to prevent freeze-thaw cycles.

Precautions

TPP1 Antibody (N-term) is for research use only and not for use in diagnostic or therapeutic procedures.

TPP1 Antibody (N-term) - Protein Information

Name TPP1

Synonyms CLN2

Function Lysosomal serine protease with tripeptidyl-peptidase I activity (PubMed:[11054422](#), PubMed:[19038966](#), PubMed:[19038967](#)). May act as a non-specific lysosomal peptidase which generates tripeptides from the breakdown products produced by lysosomal proteinases (PubMed:[11054422](#), PubMed:[19038966](#), PubMed:[19038967](#)). Requires substrates with an unsubstituted N-terminus (PubMed:[19038966](#)).

Cellular Location

Lysosome. Melanosome. Note=Identified by mass spectrometry in melanosome fractions from stage I to stage IV

Tissue Location

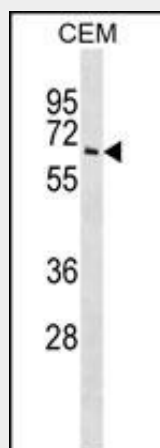
Detected in all tissues examined with highest levels in heart and placenta and relatively similar levels in other tissues

TPP1 Antibody (N-term) - Protocols

Provided below are standard protocols that you may find useful for product applications.

- [Western Blot](#)
- [Blocking Peptides](#)
- [Dot Blot](#)
- [Immunohistochemistry](#)
- [Immunofluorescence](#)
- [Immunoprecipitation](#)
- [Flow Cytometry](#)
- [Cell Culture](#)

TPP1 Antibody (N-term) - Images



TPP1 Antibody (N-term) (Cat. #AP17047a) western blot analysis in CEM cell line lysates (35ug/lane). This demonstrates the TPP1 antibody detected the TPP1 protein (arrow).

TPP1 Antibody (N-term) - Background

This gene encodes a member of the sedolisin family of serine proteases. The protease functions in the lysosome to cleave

N-terminal tripeptides from substrates, and has weaker endopeptidase activity. It is synthesized as a catalytically-inactive enzyme which is activated and auto-proteolyzed upon acidification. Mutations in this gene result in late-infantile neuronal ceroid lipofuscinosis, which is associated with the failure to degrade specific neuropeptides and a subunit of ATP synthase in the lysosome.

TPP1 Antibody (N-term) - References

Souweidane, M.M., et al. J Neurosurg Pediatr 6(2):115-122(2010)
Walus, M., et al. Hum. Mutat. 31(6):710-721(2010)
Latrick, C.M., et al. EMBO J. 29(5):924-933(2010)
Kuizon, S., et al. PLoS ONE 5 (8), E11929 (2010) :
Goldberg-Stern, H., et al. Pediatr. Neurol. 41(4):297-300(2009)